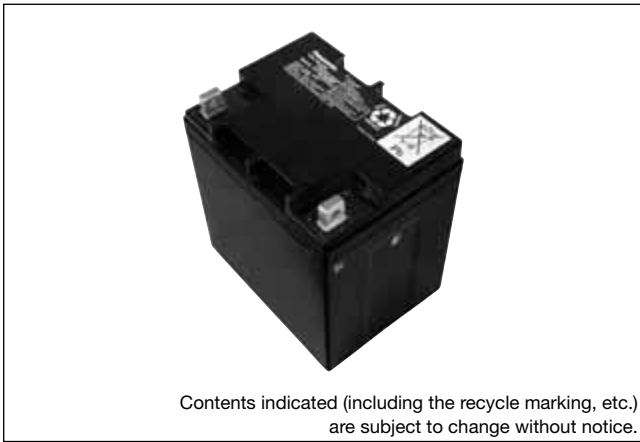
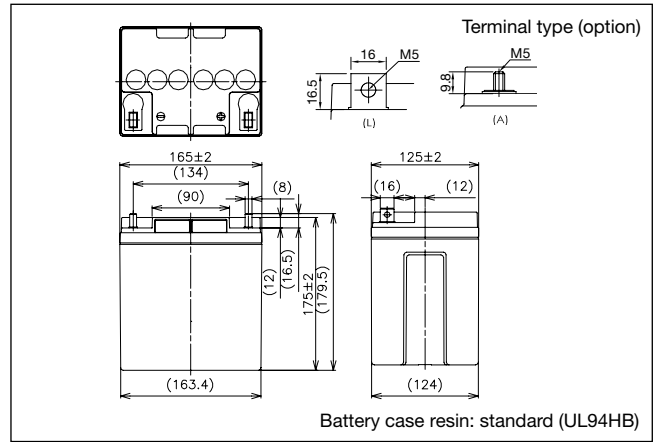


**LC-XC1228P**

For main power supplies.  
Cycle long life type.



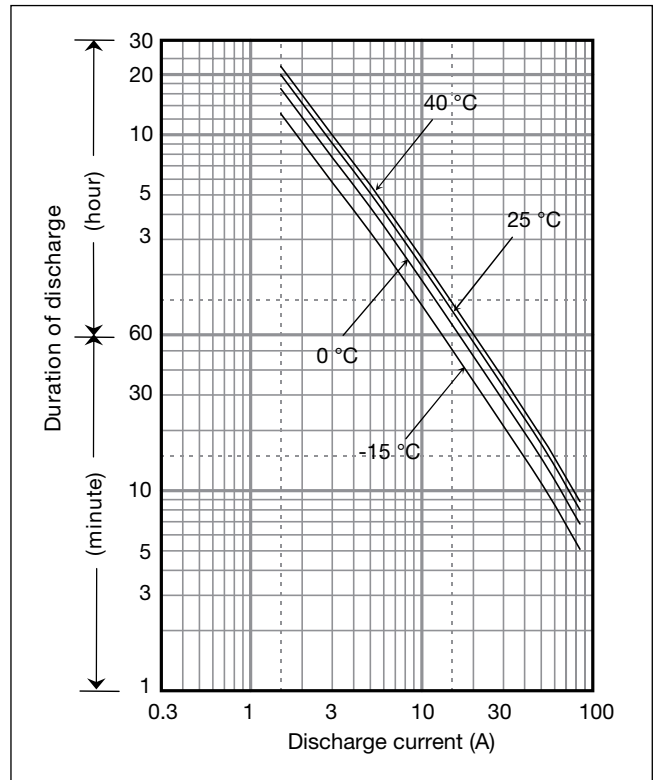
**Dimensions (mm)**



**Specifications**

Nominal voltage	12 V	
Nominal capacity (20 hour rate)	28 Ah	
Dimensions	Length	165 mm
	Width	125 mm
	Height	175 mm
	Total Height	179.5 mm
Approx. mass	10 kg	
Terminal	M5 Bolt and Nut type	

**Duration of discharge vs Discharge current**



**Characteristics**

Capacity (25 °C)	20 hour rate 10 hour rate 5 hour rate 1 hour rate	28.0 Ah 26.5 Ah 25.0 Ah 21.0 Ah
Internal resistance	Fully charged battery (25 °C)	8 mΩ
Temperature dependency of capacity (20 hour rate)	40 °C	102 %
	25 °C	100 %
	0 °C	85 %
	-15 °C	65 %
Self discharge (25 °C)	After 3 months	91 %
	After 6 months	82 %
	After 12 months	64 %

**Watt Table**

(Wattage/Battery)

Cut-off V	3min	5min	10min	15min	20min	30min	45min	1h	1.5h	2h	3h	4h	5h	6h	10h	20h	24h
9.6V	1423	1160	865	664	585	410	304	260	159	129	91.6	74.1	61.1	52.8	31.8	16.8	14.0
9.9V	1357	1093	849	654	579	404	294	254	156	128	90.4	72.9	59.9	51.6	31.8	16.8	14.0
10.2V	1301	1026	818	643	567	397	294	251	155	127	89.3	71.7	59.9	51.6	31.8	16.8	14.0
10.5V	1201	976	784	621	545	386	282	247	154	126	88.1	71.7	59.9	51.6	31.8	16.8	14.0
10.8V	1052	903	773	610	539	374	255	218	149	118	84.5	70.5	59.9	50.4	31.8	16.8	13.9

**Ampere Table**

(Ampere/Battery)

Cut-off V	3min	5min	10min	15min	20min	30min	45min	1h	1.5h	2h	3h	4h	5h	6h	10h	20h	24h
9.6V	128	104	77.2	57.7	50.4	35.0	25.9	22.1	13.5	10.9	7.7	6.20	5.10	3.40	2.65	1.40	1.17
9.9V	122	98	75.8	56.9	49.9	34.5	25.0	21.6	13.2	10.8	7.6	6.10	5.00	4.30	2.65	1.40	1.17
10.2V	117	92	73.0	55.9	48.9	33.9	25.0	21.3	13.1	10.7	7.5	6.00	5.00	4.30	2.65	1.40	1.17
10.5V	108	88	70.0	54.0	47.0	33.0	24.0	21.0	13.0	10.6	7.4	6.00	5.00	4.30	2.70	1.40	1.17
10.8V	95	81	69.0	53.0	46.5	32.0	21.7	18.5	12.6	10.0	7.1	5.90	5.00	4.20	2.65	1.40	1.16

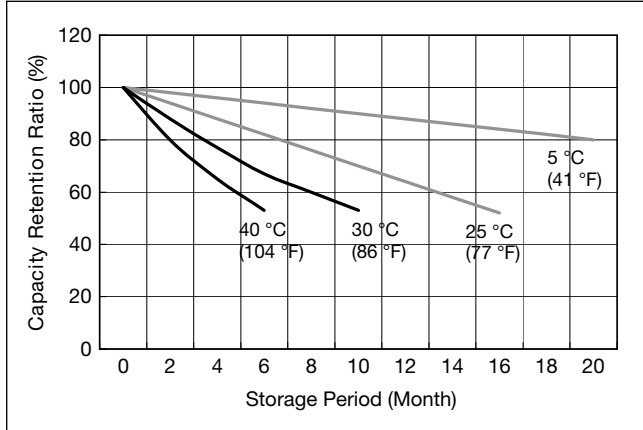
**Charging Method**

Trickle use Control voltage: 14.5 - 14.9 V; Initial current 11.2 A or smaller

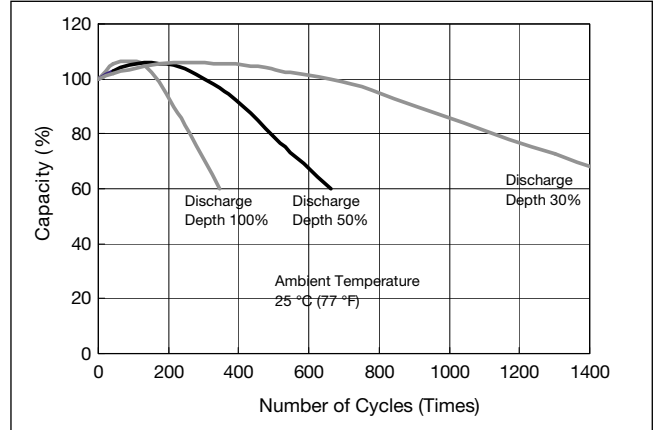
**Cut off voltage**

Discharge current	1.4 A - 5.6 A	5.6 A - 14 A	14 A - 28 A	28 A - 56 A	56 A - 84 A
Cut off voltage (V)	10.5	10.2	9.9	9.3	8.7

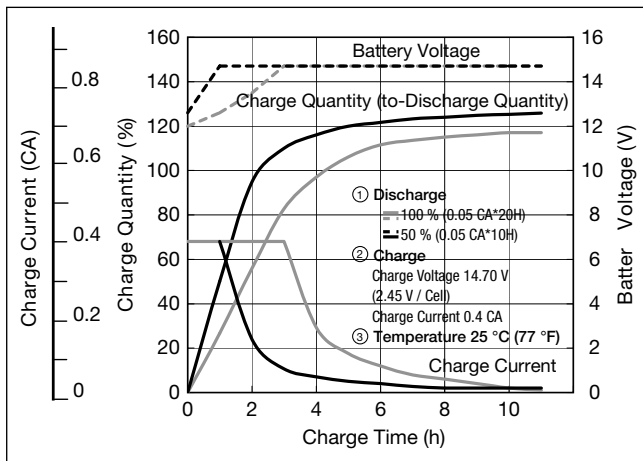
**Residual capacity vs storage period**



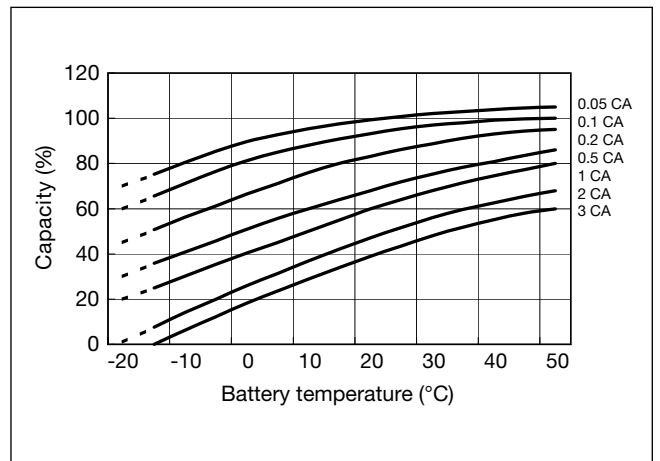
**Cycle life vs Depth of discharge**



**Constant-voltage and constant-current charge characteristics**



**Discharge capacity by temperature and by discharge current**



**Discharge characteristics**

